

Revision History

Version	Date	Detail
Ver 1.0	2016.07.18	Document Released. - [Vertical]Datasheet_160718.pdf
Ver 1.1	2016.07.20	Transportation Function Edit. - [Vertical]Datasheet_160720.pdf
Ver 1.2	2016.08.24	Retail Product Edit, Transportation Product Edit, City Product Edit - [Vertical]Datasheet_160824.pdf
Ver 1.3	2017.01.21	New Camera, NVR Product Edit - [Vertical]Datasheet_170121.pdf
Ver 1.4	2018.05.09	Transportation Product Edit

Documents over the past 2 months from the date of publication Please switch to the new version

문서 발행일부터 2개월 이상 지난 문서는 새로운 버전의 문서로 변경해 주십시오. [Visit Here▶](#)

Vertical Solution

for Retail



Vertical Solution

for Retail

Business Insights into action

Our retail solution not only meets the daily requirements of security and video surveillance but also covers growing needs of business insights to improve the performance of shops.

Key Scenario



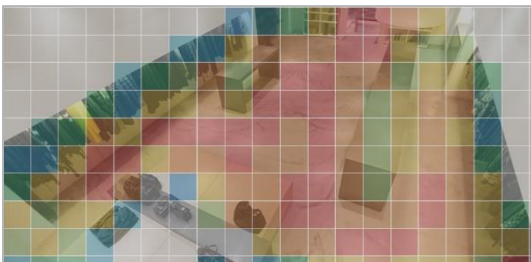
POS / EAS integration

When you have a POS connected to SSM, all transaction data will be captured by the SSM and you can search with keyword and watch video and receipt side by side. And there is an event alarm triggered by EAS, the alarm will be notified by the SSM and any supported event action could be utilized.



People Counting Integration

People Counting will be running on the camera and SSM will display statistical information and enables to export to excel file and could combine POS transaction data to calculate conversion rate.



Heat Map

New camera-based technologies are helping retailers track what customers touch, what customers ignore, and where customers walk, so they can optimize store layouts like never before.



Video Analytics and Statistics

In-store data analysis with various kinds of video analytics for business intelligence. Analyze data and provide insights with data visualization for your store.

Recommended Product



SSM Retail



QND-6070R



SNV-6013



PNF-9010R

Vertical Solution

for Transportation



Vertical Solution

for Transportation

Highly reliable On-board CCTV solution

We offer a new way to secure vehicles and passengers through our on-board solution compared to conventional one.

Key Scenario



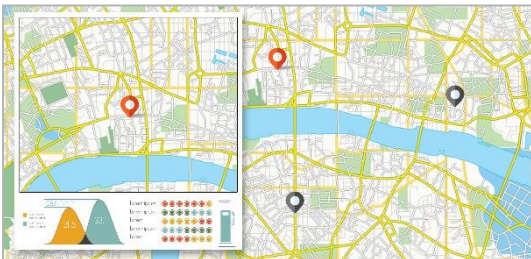
CCTV Products | Rugged Design

All equipment installed on railway vehicles is required various industrial grade standards. Specially designed our CCTV products for railway vehicles comply to all necessary industrial standards such like EN 50155 and EN 50121-3-2. Also IP66 and IK10 grade products allow customers to install them for outdoor environment.



SSM Transportation | Automatic Backup

When a vehicle arrives at a service depot, recorders on the vehicle will be linked to ground network of the depot via WiFi. Once SSM Archiver discovers the recorders on the same network, then it will start backup procedure automatically. Even though the task is interrupted, the backup will be resumed when the vehicle stops at next depot or returns to the same depot automatically.



SSM Transportation | Real-time Tracking

When a vehicle is on roads, recorders in the vehicle will update its GPS data to SSM MTS server in a central monitoring center via cellular network such like 3G or LTE. Managers in the center can track vehicle's route using a digital map on SSM Console.



SSM Transportation | Remote Monitoring *

A recorder can have various peripherals such like panic button, alarm inputs, GPS, and even G-sensor. Information from these devices can be utilized to determine abnormal or emergency situation which should be controlled by central monitoring center. SSM transportation gives effective way to aware and manage the situation in timely manner by means of real-time remote monitoring via cellular network.

* This feature will be available later

Recommended Product



SSM Transportation



TRM-1610M/S



XNV-6013M



XNV-6022RM



PNF-9010RVM

Vertical Solution

for Banking

WISENET



Vertical Solution

for Banking

01-2017

Large scale management at ease

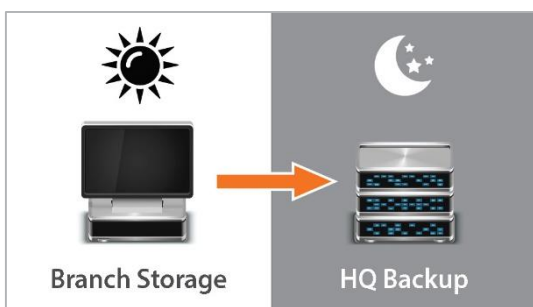
We offer a new way to manage your video surveillance equipment at large number of branches and help your migration plan from legacy analogue system to cutting-edge network system with binding of your IT infra.

Key Scenario



Seamless integration of analog, IP, 3rd party systems

Security managers in HQ suffer from daily duties such like managing whole CCTV systems properly and collecting video evidences from thousands of CCTV equipment in remote branches connected through very narrow leased network. Our solution helps you integrating various generations CCTV system and managing them easily even through not enough network bandwidth. Also the solution can smoothly be part of your IT system.



Centralized device management with dashboard, Batch job

Because network bandwidth is not enough to transfer video data among branches and your HQ, it is not an easy task for you to backup video evidences from remote branches during working hours. Our system allows you to create batch tasks for video backup during night time and reports you the result automatically.

Recommended Product



Vertical Solution

for City

WISENET



Vertical Solution

for City

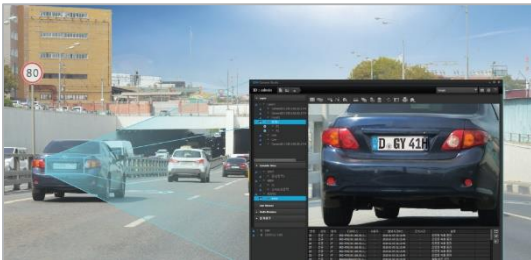
01-2017

 **Hanwha**
Techwin

Smart monitoring center for wide surveillance

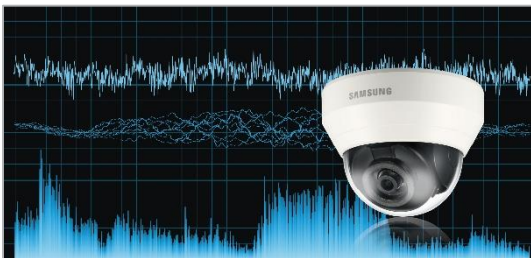
Our city solution allows the seamless integration with our cameras and NVRs to focus more on the real threats identified with the help of visual and audio analytics tools and devices.

Key Scenario



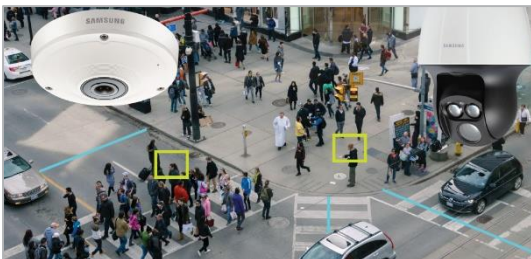
ANPR (Auto Number Plate Recognition)

Monitoring vehicles moving around the city is one of important targets to deter crimes and automatic recognition could help identify the location of last watched camera for specific vehicle.



Audio analytics

To secure the city, visual information is important but this could not cover all. There is a growing need for audio analytics to come into the place to target the possible threat.



Event Tracking

If a box/fisheye camera is used as overview camera and detect a possible threat based on motion or virtual line, PTZ will automatically follow the object via SSM.



Face capture

If a PTZ camera detect a person, it will zoom in and capture its face and then zoom out. It allows the best use of the PTZ cameras, otherwise wasted without the proper operation agents.

Recommended Product



SSM Enterprise



XNV-8080R



PNP-9200RH



PNF-9010RV



SNO-6095RH